

TAS TRAINING

STATE OF MD

MCG, Department of Finance

Agenda

Part 1

- Learning objectives
- Icebreaker
- What's the Same: Overall Process & Data
- What's New – Day in the life
- Error Handling

[break]

Part 2

- System Demo
- Hands on testing

Part 1 - Content

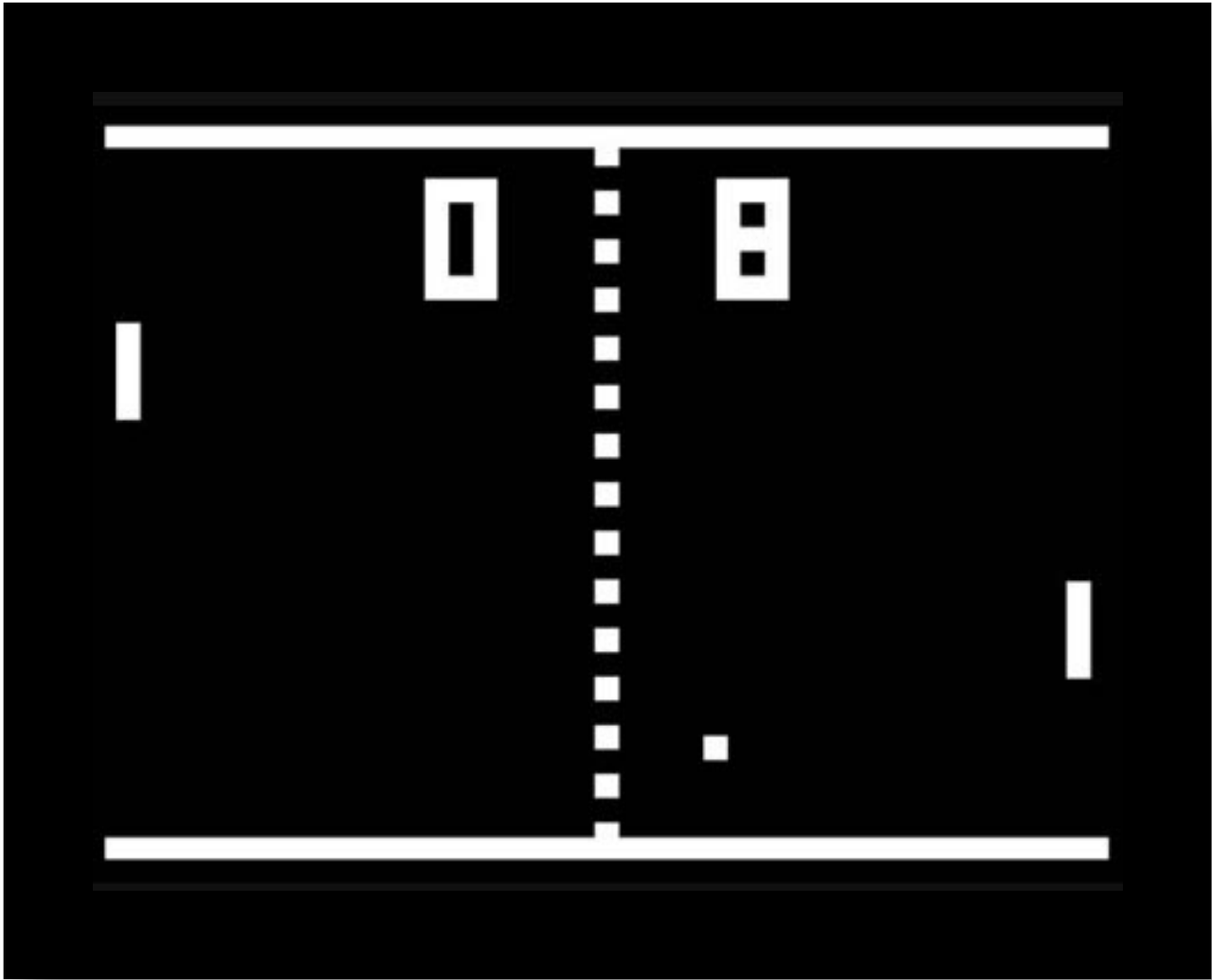
Presented by Diane Bloom & Skyler Grubbs

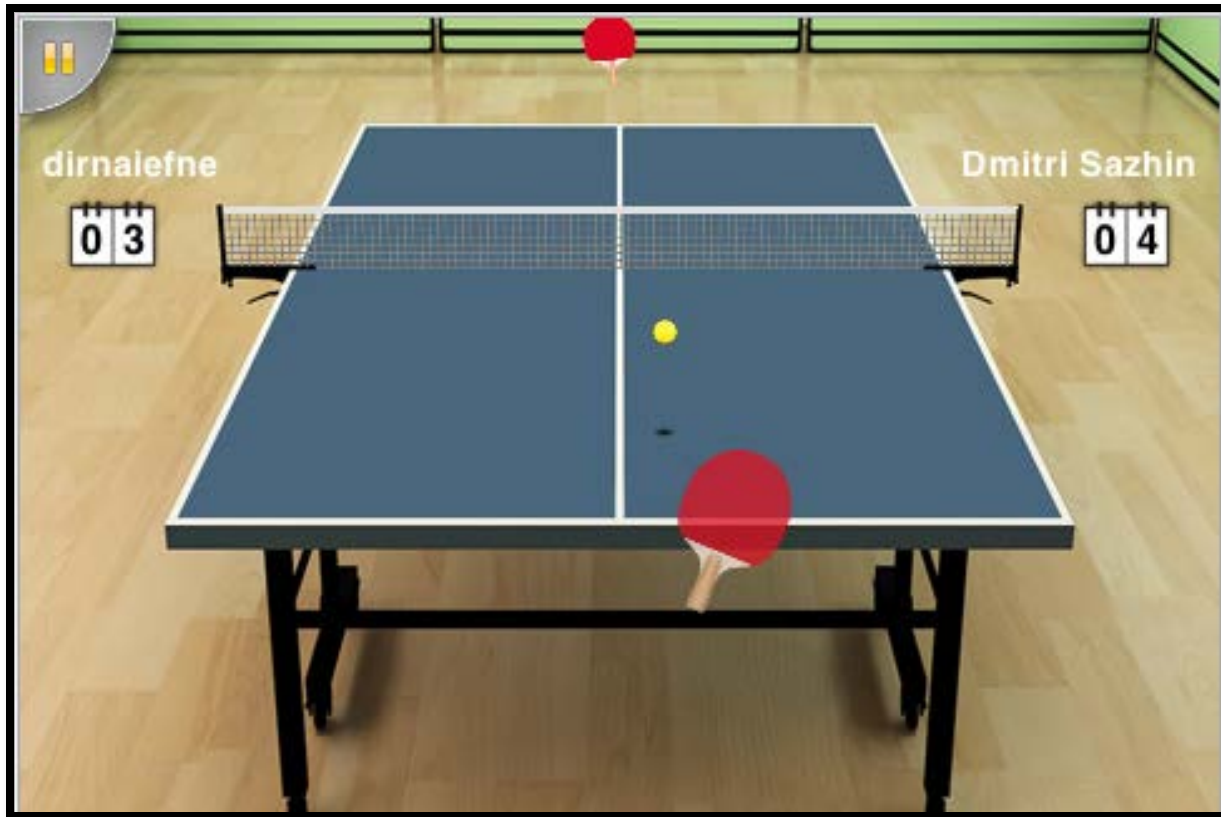
Goals for Today's Session

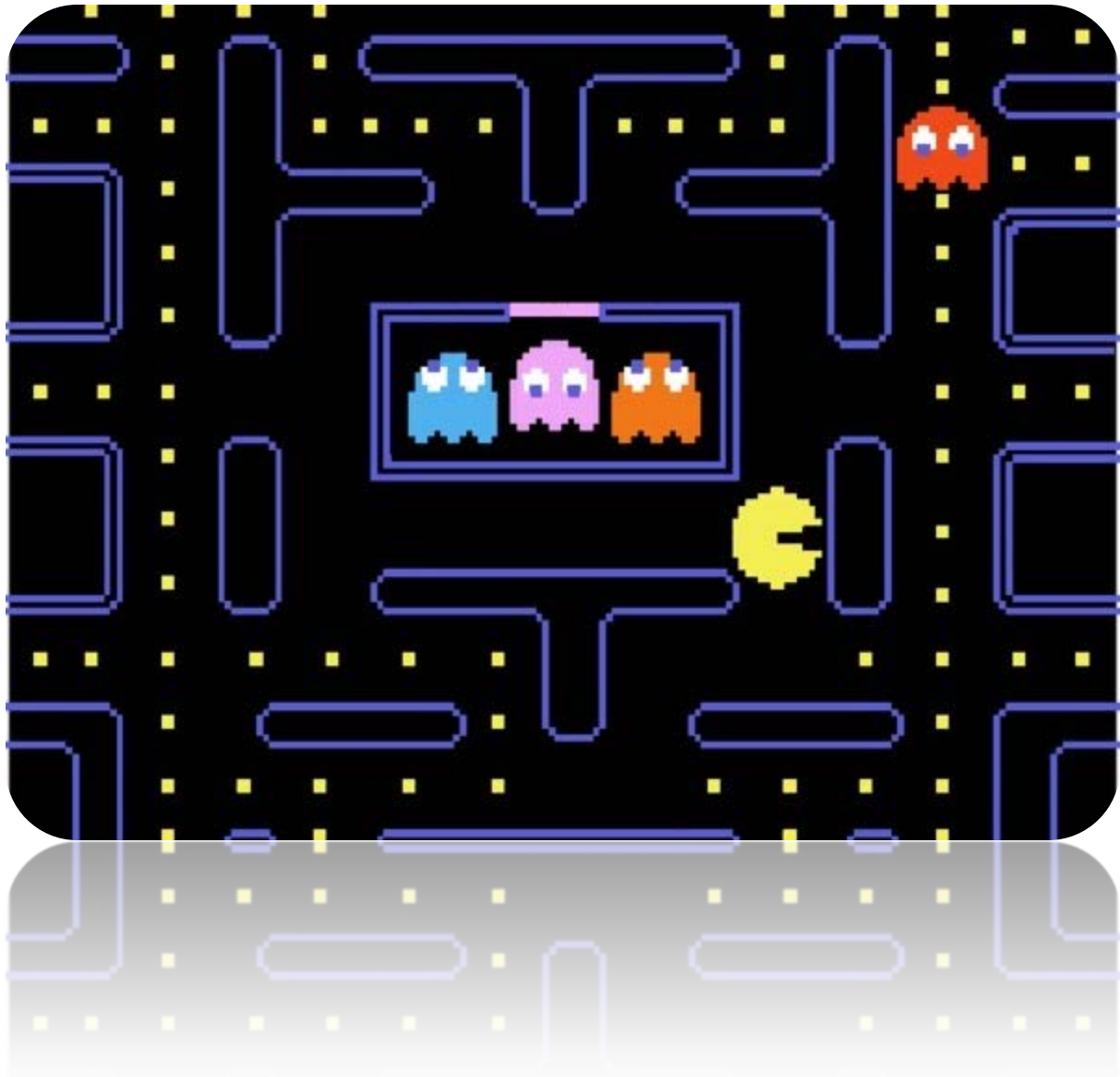
- **Global understanding of end to end process**
- **Understanding your role as a TAS user**
- **Learning how to perform functions in TAS**
- **Understanding business and system processes as it relates to TAS**
- **Knowing your resources**

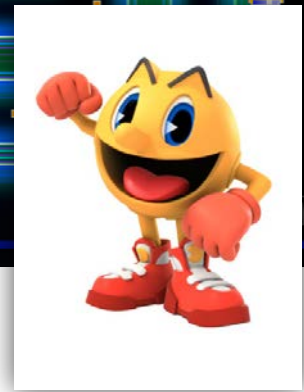
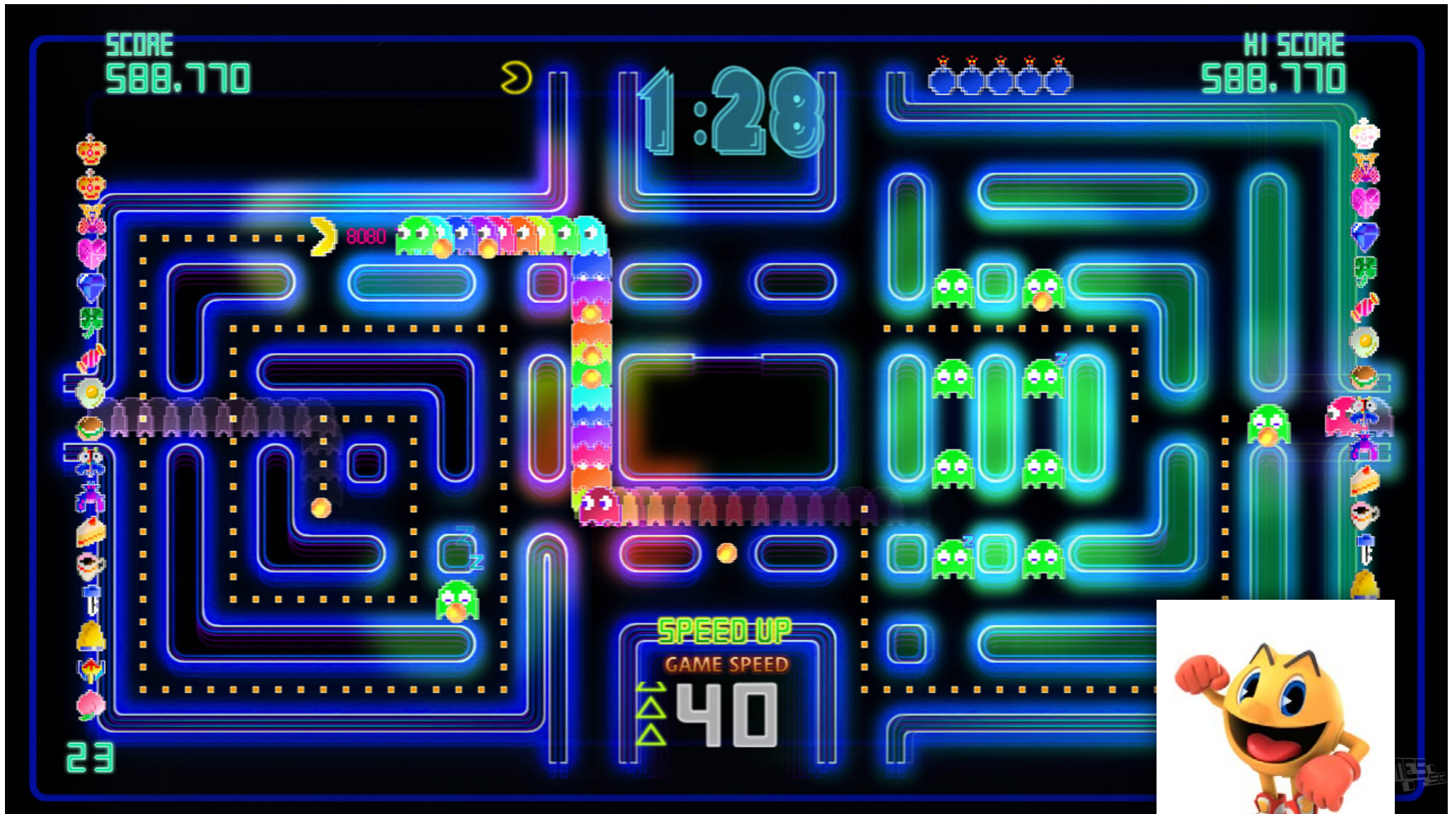
Intro & Ice Breaker













Date: April 8, 1848
Weather: cool
Health: good
Food: 1130 pounds
Next landmark: 83 miles
Miles traveled: 102 miles
Press SPACE BAR to





Why a new TAS?

Legacy Transaction Menu

1--> NAME/ADDRESS MAINTENANCE

2--> GENERAL INQUIRY

To operate the demonstration as a legacy application, do the following:

- 1). Select option 1.
- 2). Respond to customer number prompt
- 3). View the customer name/address di
- 4). Press PF3 to return to this menu.
- 5). Select option 2.
- 6). Respond to customer number prompt
- 7). View the customer detail display.
- 8). Press PF3 to return to this menu.
- 9). Press PF3 again to return to the

Enter Option ==> █

From this ... to this!



Home Page

[MCG TAX Assessment System Overview](#)

MCG TAX Assessment System Overview

- coming soon

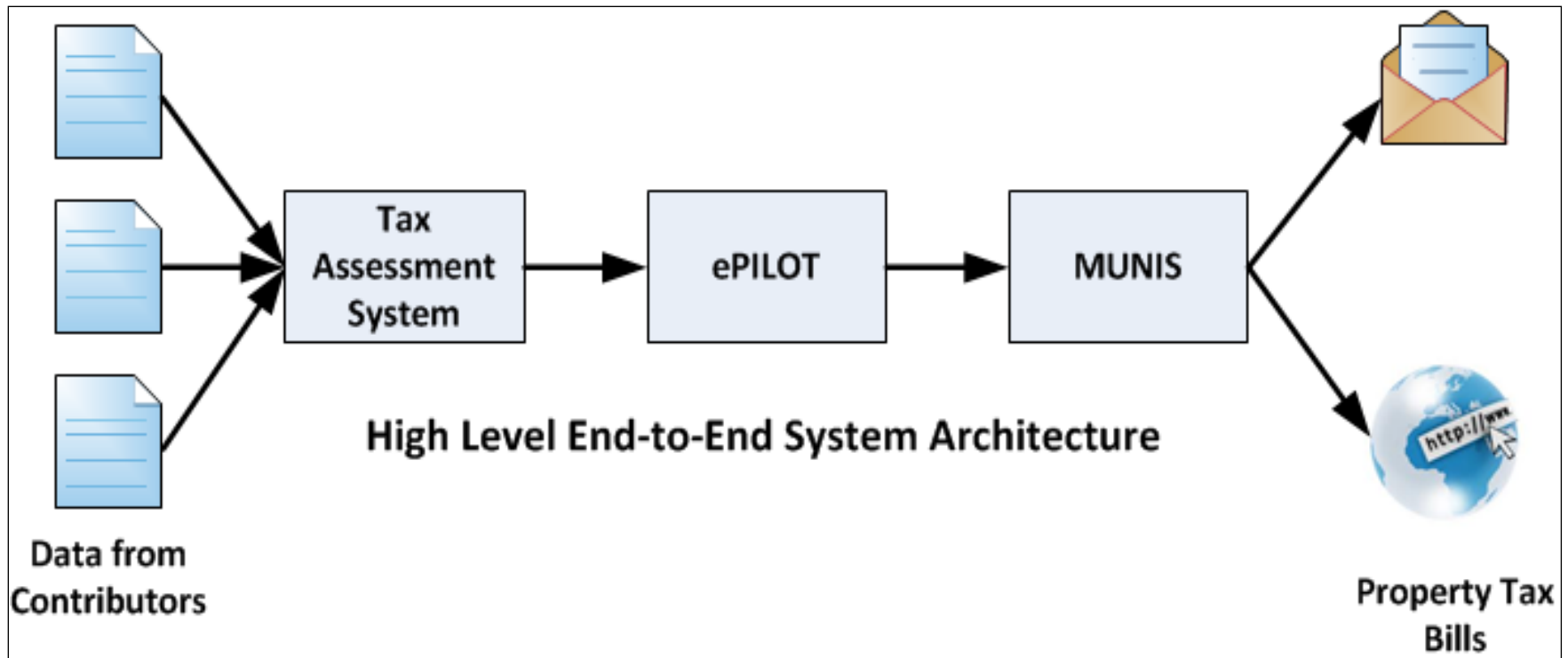
[Batch Job Overview](#)

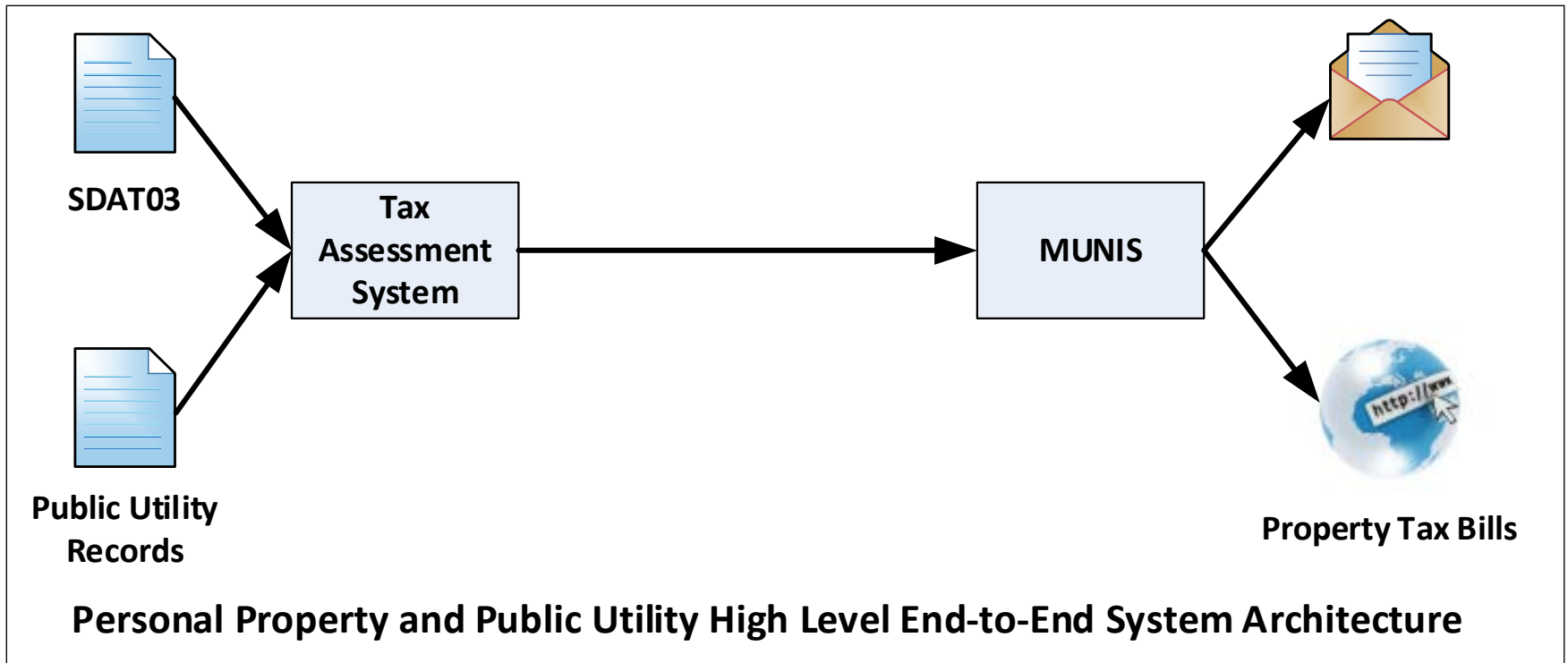
[Agency Contact Information](#)

Privacy Policy | User Rights | Accessibility | Disclaimer
Copyright 2002-2014 Montgomery County Government All Rights Reserved
Best viewed with IE 7.0 and higher

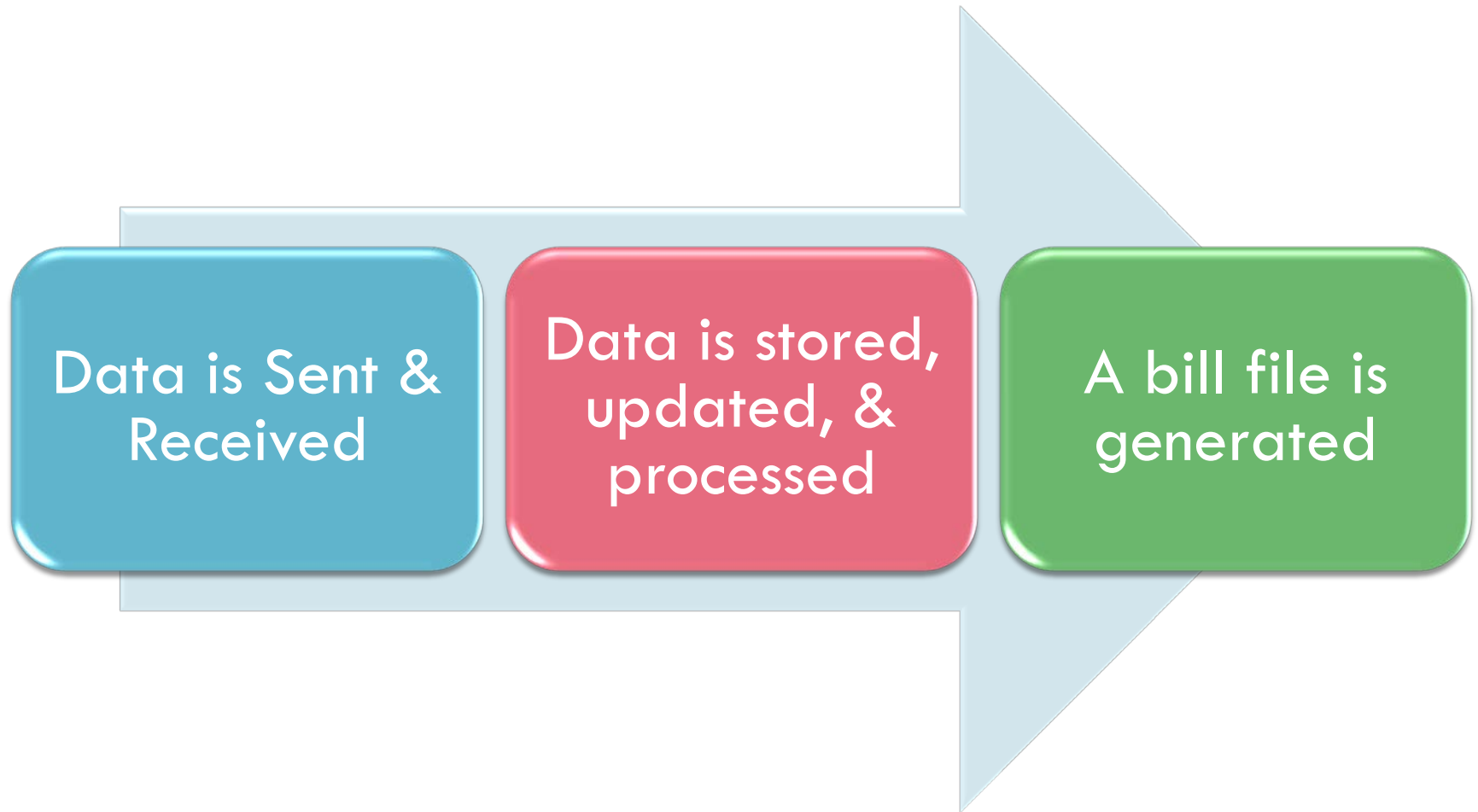


What's the overall process?





What's the overall process?



Let's talk data

State of Maryland Sends four different files to MCG:

SDAT01 – Full State File

SDAT02 – Home Owner Credit

SDAT03 – Personal Property

SDAT04 – New Construction

Let's talk data

MCG sends subsets of data called **extracts**

Refer extract issues to FIN-IT



Send FIN-IT Issues To

#FIN.TAS@montgomerycountymd.gov



Day in the life



It's April.

TAS is live.

You're at your desk...

What happens in April?



SDAT Files

Public Utility

Monthly Revised

How is the data sent?

Is there a deadline?

How do we know the data was received?

What do we do to make changes to data?

What about issues?

How is the data sent?



New Term: ESB

Enterprise Service Bus



There are more specifics about how ESB delivers data in your guide. We'll review general information since FIN-IT will manage these issues

How is the data sent?

ESB gets picks it up from your server!

Like a scheduled pick up

**Changes are made in the GUI...
we'll discuss more later**



Please check your guide for naming conventions & file formats

Are there any deadlines?

MONTHLY

SDAT01 – First business day of the month

SDAT02 – First & third week of the month

SDAT03 – First & third week of the month

Public Utility & others (ad hoc) – GUI entries

QUARTERLY

SDAT04 & WSSC

Usually October, January & April

In June, it is processed but billing is combined with annual



Treasury will be managing this schedule and will contact you if/when files are late

How do we know it has arrived?

To: #DTS.ESBTech; #FIN.SDAT01 Input Success
Cc:
Subject: TESTING: ESB Action Completed for SDAT01 to TAS

ESB Event Message Details for service: SDAT01toTA

Transfer Date = Tue Dec 31 16:21:57 EST 2013

MULE_ENCODING = UTF-8
originalFilename = RLFIL16.zip

ESB Server: MCG-B281.mcgov.org



From: #DTS.ESBTech [DTS.ESBTech@montgomerycountymd.gov]
To: #DTS.ESBTech; #FIN.SDAT02 Input Failure
Cc:
Subject: TESTING: ERROR: ESB Action Failed for SDAT02 to TAS

ESB Event Message Details for service: SDAT02toTAS

Transfer Date = Tue Dec 31 15:49:25 EST 2013

MULE_ENCODING = UTF-8
originalFilename = 20131226.htc.txt

EXCEPTION DETAILS

There are data errors in the file. Please correct and resubmit.

ESB Server: MCG-B281.mcgov.org



The State is responsible to fix data error in SDAT files let's discuss

What about issues?



Travel Issue (did not arrive)

State, Treasury, & FIN-IT will be notified.
You will be contacted by FIN-IT to address the issue.

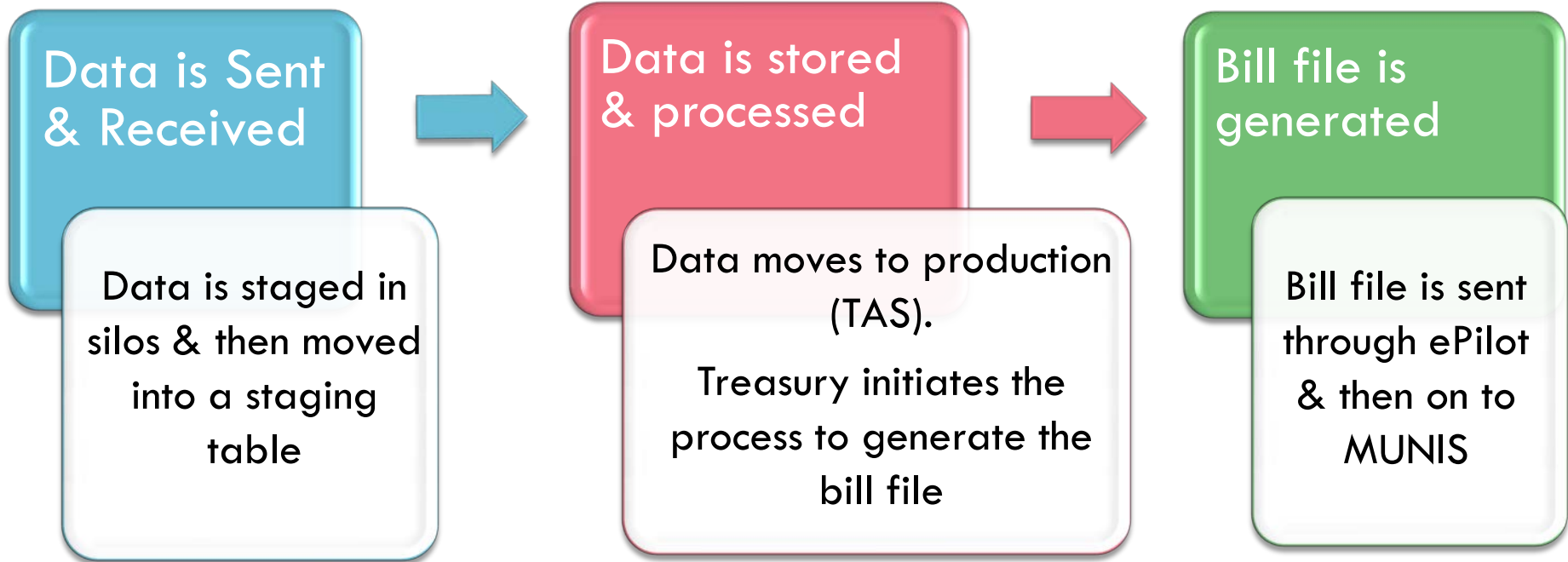
Data Issue

If errors are found, the file will be sent back before it gets loaded to the production table.



TAS will process as much of the data as possible. Remaining errors are to be corrected.

What do we do now?



What do we do now?

July 1 (2013) Process

SDAT01 & SDAT02 update data in the GUI

Since this process has occurred, changes are now occurring through the GUI...

Public Utility & others (ad hoc) – GUI entries

Subsequent (New Cons) SDAT04 &
SDAT03 (Personal Property) – Not GUI Driven

Part 2 – Demo & Lab

System Demo – Lily Li & Andrew Akinola

Exercises in TAS – Ying Li

Recap

Did you meet the goals we set?

What questions do you still have?

What's next?

What are your resources moving forward?

- On site assistance as requested
- Quick Start Guides
- Online UPKs (only internal; need to discuss)
- 2828